



ASSE/WORLD HERITAGE PRIVATE HIGH SCHOOL PROGRAM

LAKE COUNTRY LUTHERAN HIGH SCHOOL
MILWAUKEE, WI USA

LAKE COUNTRY LUTHERAN HIGH SCHOOL



About the school

In 1999, the Lutheran High School Association of Greater Milwaukee founded its third school, Lake Country Lutheran High School (LCL), near the Great Lakes in the Milwaukee Metropolitan area of Greendale, Wisconsin. Lake Country Lutheran High School is owned and operated by The Lutheran High School Association of Greater Milwaukee, which is comprised of Lutheran churches that together support the operation of its schools. The school is focused on providing exceptional experiences in Academics, Athletics, Arts, and Spiritual Life. Using these pillars of education, the Lake Country Lutheran High School students leave with a world of knowledge and meaningful connections. The LCL community raised funds to build an expansion for five additional classrooms, a choir room, a band room, and a multi-use space for performing arts. But LCL is not about the building, it is about the nurturing of all aspects of their student's lives, so they can become the leaders of tomorrow!



About the area

Milwaukee, this cool city, laced with walkable streets, authentic neighborhoods full of character, is positioned where three rivers meet and on the shores of Lake Michigan. A mix of old and new, Milwaukee preserves – and celebrates – its historic German roots while making way for trendy shopping and dining, and all the outdoor recreation an urbanite could want. Filled with museums, art galleries, you will learn about space, zoology, geology and other culture. For a unique view, try the zoo's ropes course and zip line. And it is only a 90-minute drive from Chicago, the third-largest city in the U.S.

ACADEMIC OVERVIEW

College Preparatory Curriculum

Lake Country Lutheran High School provides a challenging, comprehensive, college preparatory curriculum. The curriculum serves a varied population of learners with relevant, rigorous, and well-rounded instructional content and form for college and life preparation.

AP/Dual Credit Program

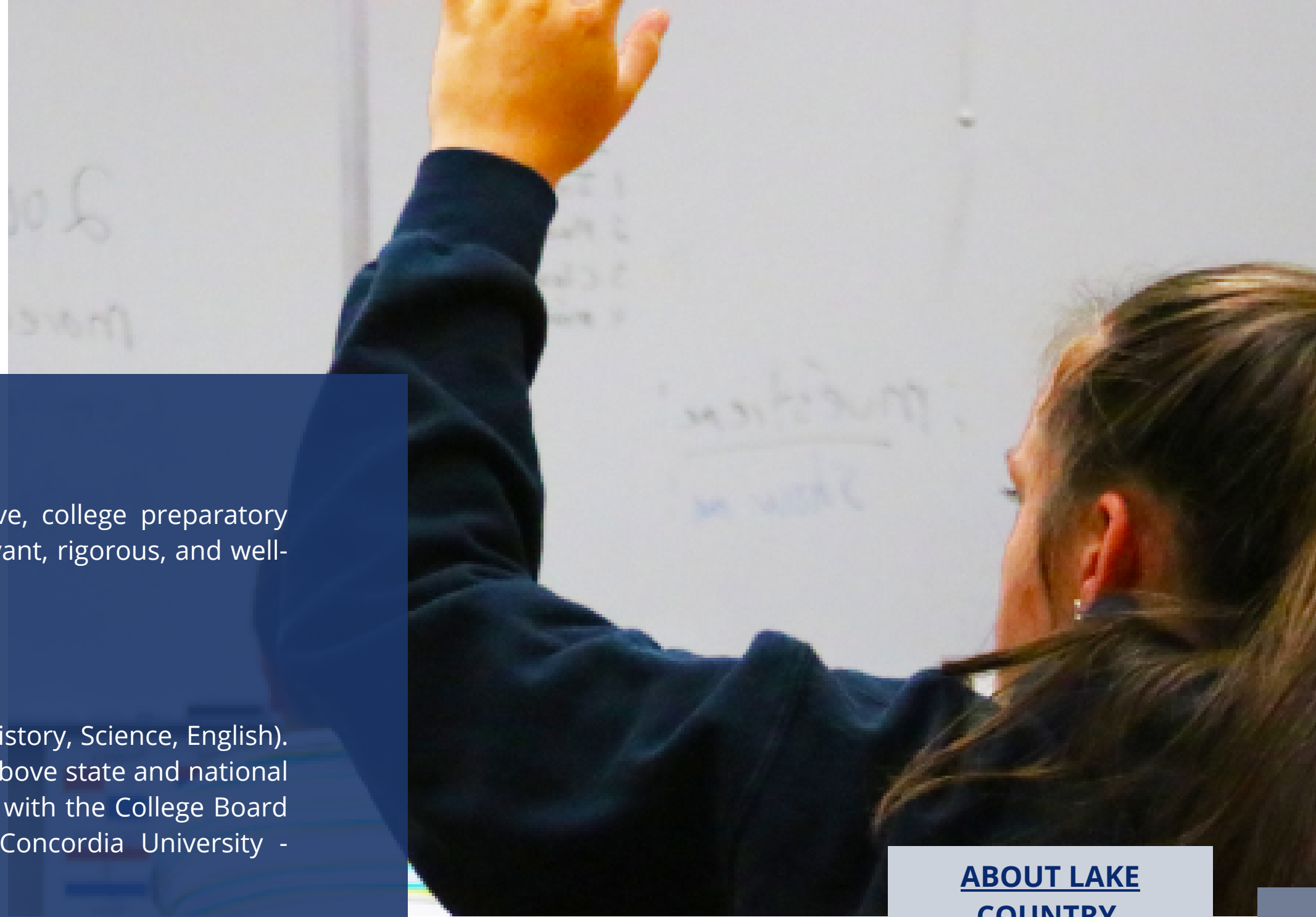
Multiple AP courses are available to students across the curriculum (Math, History, Science, English). Lake Country Lutheran High School's multiple AP results consistently score above state and national averages. Lake Country Lutheran High School enjoys powerful partnerships with the College Board Advanced Placement Program (AP) and the Dual Credit Program with Concordia University - Nebraska.

STEAM Program and Technology

Lake Country Lutheran High School's strong Science and Math Department curricular coupled with our Computer Science, Arts and Technology offerings will lead the way in helping students experience our STEAM program.

[ABOUT LAKE COUNTRY](#)

[SCHOOL PROFILE](#)



ATHLETICS, ARTS, CLUBS & ACTIVITIES

Athletics

Boys and Girls Basketball, Boys and Girls Cross-Country, Boys and Girls Soccer, Girls Swimming, Boys and Girls Tennis, Boys and Girls Track & Field, Boys Wrestling, Boys Baseball, Boys Football, Boys and Girls Golf, Boys and Girls Dance Team, Girls Softball, Girls Volleyball, Girls Field Hockey, Boys Ice Hockey, Boys and Girls Trap Shooting, Boys and Girls Skiing.

Arts

Students who have interest in developing skills or utilizing their talents are encouraged to get involved in one of the many ways: acting, performing, singing, dancing, playing instruments, set creative design, set construction, stage management, make-up and costume design, technology support (lights/cameras/sound), and tickets & concessions.

Clubs and Activities

Forensics, FTC Robotics Team, LIFT Program, Math/Science Team, National Honor Society, Student Council, Student Volunteering, Yearbook and more!





APPLY NOW!

Lake Country Lutheran High School provides a well-rounded high school experience. The school offers rigorous academics, a supportive environment, and participation in athletics, music, drama, clubs, student council. Committed to the success of each student, faculty and staff at Lake Country do their best to ensure that each student is properly prepared for the challenges they will face in the future. With this in mind, the school administration and faculty constantly review their academic and co-curricular programs to ensure dynamic and meaningful experiences for students so that after they leave, each student will continue to grow in society. [Apply here](#) to attend the highly rated Lake Country Lutheran High School this fall!

